

The Old Farmhouse

PUB & ROOMS



Welcome to the Old Farmhouse...

We're so glad you've chosen to stay with us in one of our individually designed guest bedrooms. You are staying above our beautiful gastro pub decorated in a rustic style serving authentic, homemade Italian food crafted by "Piena E Felice" and our favourite wines and beers from across the world in the heart of Kentish Town, Located between Camden Town and Hampstead, An area known for its music and film locations and a short distance to the heart of Central London.

Guest Information

Dear guest,

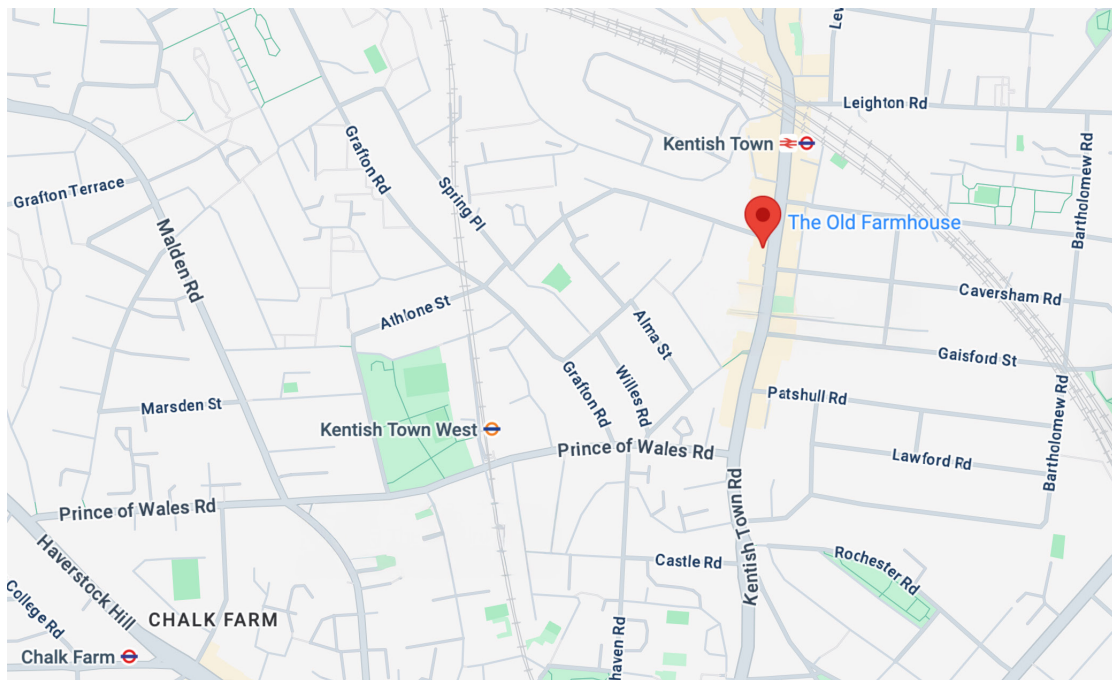
We welcome you to the Old Farmhouse Pub & Rooms & wish you a comfortable stay with us. Please do not hesitate to contact our Bar in the pub downstairs if you require any assistance or have any queries during your stay, we will be happy to help. Please press the Office/Bar button on your telephone.

Luggage

There is luggage storage available if you arrive prior to check in times & your room is not ready yet. Please check in with us and we will keep your bags until your bedroom is available. Perhaps you are checking out of the rooms & you still have things to do, we will keep your luggage for you even if you have checked out.

Location

The Old Farmhouse is located at **289 – 291 Kentish Town Road** three-minute walk from Kentish Town Tube / Rail station (Northern Line/Rail); a 8 minute walk from Kentish Town West Overground Station: a 15 minute walk to Camden Town Station (Northern Line) and 20 minute by bus to St Pancras International, the London terminus for Eurostar services to continental Europe.



History - The Old Farmhouse Est. 1885

The Old Farmhouse stands at the corner of the vibrant Kentish Town Road and Holmes Road. A short distance from Kentish Town Tube/Rail Station and about seven-minute walk from Kentish Town West Overground Station.

Kentish Town (the name likely derives from Celtic Ken-ditch or Caen-ditch, meaning "bed of a waterway") is an area of northwest London, England, in the London Borough of Camden, close to Camdem Town and Hampsted Heath.

Originally known as the Star & Garter in 1862, it was rebuilt in its present form in 1885 with striking Victorian red brick exterior and rechristened the Old Farmhouse.



Local Attractions

Kentish Town, nestled in North London, offers a delightful mix of cultural, culinary, and natural attractions.

O2 Forum Kentish Town

Legendary music venue located 8-minute walk from the Old Farmhouse hosting live performances from top bands from across the world.

Queen's Crescent Market

Operating since 1876, this traditional street market offers a variety of goods, from fresh produce to clothing, every Thursday and Friday.

Camden Town Market & Camden Lock Regent's Canal

London famous market with great walks along the canal which flows from Limehouse Basin in the East End and connects with the river Lea and crosses North London to reach Little Venice where our sister venues the Waterway & Summerhouse are located. Music venues and a vibrant atmosphere, the more you look the more you will find. Located 12-minute walk from the Old Farmhouse.

Hampstead Heath

Just a short walk away, this expansive park features woodlands, swimming ponds, and panoramic views of London from Parliament Hill.

The Emirates Stadium

Home of Arsenal Football Club is a mere 20-minute walk.
Arsenal FC Official Website | Home | Arsenal.com

Kentish Town City Farm

A charming urban farm where visitors can interact with animals and enjoy community gardens, it's a favourite among families and offers educational programs.

All Saints Cathedral

Originally built in the 1820s, this Greek Orthodox cathedral showcases neoclassical architecture and serves as a spiritual hub for the local community.

Bar & Restaurants

Lunch & Dinner

Lunch & Dinner are served on the ground floor in our gastro pub (see menu enclosed) or visit www.theoldfarmhousepub.com
Our opening times are: Monday to Saturday 12:00 – 23:00, Sunday 12:00 – 22:30

Breakfast

We do not serve breakfast but here is a list of our favourite places for breakfast nearby:

Kossoffs

Artisanal bakery offering incredible bread, pastries, salads, sandwiches and coffee.

Neighbourhood Organic

Cafe and co-working spot with a good breakfast menu.

The Fields Beneath

Vegan coffee bar roasting their own coffee beans and a great plant-based menu.

Restaurants

Gökyüzü Kentish Town

Turkish restaurant with exceptional grilled meat, and hot and cold meze.

Queen of Sheba

Ethiopian cuisine serving authentic food with great flavours and spices.

The Parakeet

Modern British and European-inspired food with a good selection of sharing plates.

Fire & Emergency

Fire & Emergency

The Old Farmhouse rooms are fully equipped with fire prevention devices.

Fire extinguishers are located on all floors throughout the building. There are a total of two fire extinguishers points, one outside room's landing; one at the bottom of the stairs on the ground floor.

For your additional safety, please familiarise yourself with the fire alarm locations & exit routes.

Emergency contact details

Overnight Reception Between the hours of 11.30pm-7am if you have any queries or any emergency issues please call overnight receptionist on:

07701-341-774

If at any point you are asked for a password please quote **FARRINGDON**

If you discover, or accidentally start a fire:

Leave the room immediately, ensuring that the door closes fully behind you.

Activate the nearest call point to sound the alarm (These are located on the landing)

If you hear the fire alarm:

Leave the room immediately

Report to a member of staff

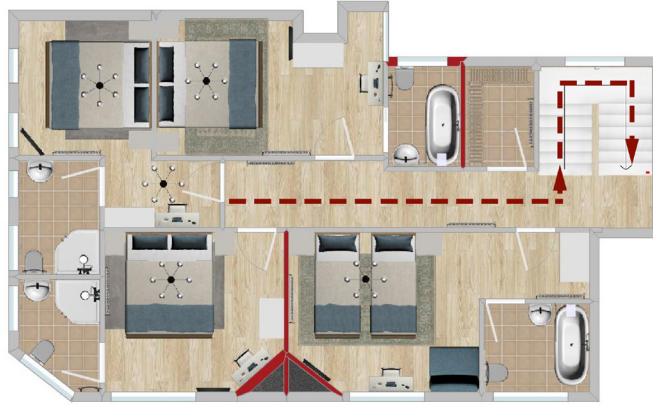
Exit the building via the stairs to the Entrance door

Go to assembly point on Holmes Road opposite the Police Station. If obvious signs of fire are observed, call **0207 627 0344** or diall **999**

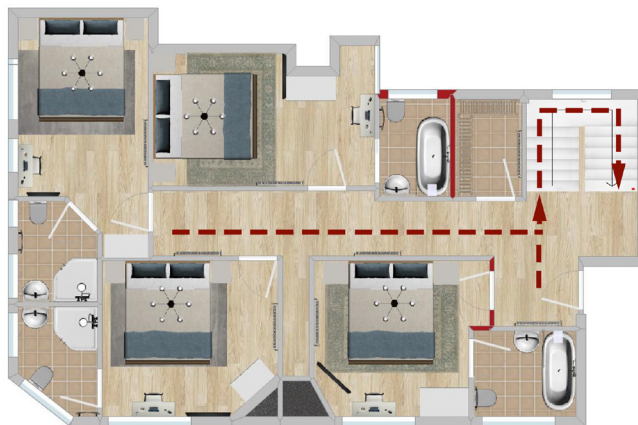
Do not re-enter the building unless told to do so by an official.

Fire Exits

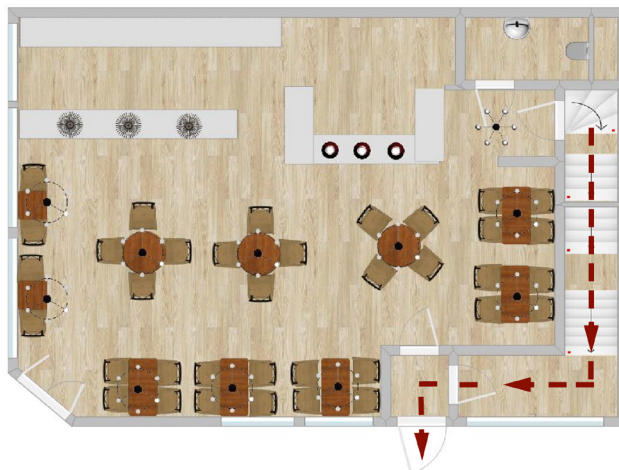
SECOND FLOOR



FIRST FLOOR



GROUND FLOOR



Local Amenities & Services

Dry Cleaning Service

We have a local trusted dry-cleaning service available for either next day service or within two hours (at an additional cost) located six minute walk from us.

Zappeo Dry Cleaning

310, Kentish Town Road, London NW5 2TH
020 3340 4349

Daily Laundry

Join us in our commitment to protect the environment. Your bedlinens and towels will only be changed upon your request. If you require your sheets to be refresh, please inform a member of staff.

If you would like to have your towels replaced, please leave them on the floor or inside the bathtub. We will not change the towels that are hanging on the rail.

We have opted for toiletries containing natural ingredients & organic extracts which have been packaged in biodegradable or recyclable material.

ATM:

The nearest ATM is within 2 minutes from us in Kentish Town Road at the COOP supermarket.

In Room facilities

Safe

There is a safe available in each room. Please follow the instructions in front of the safe door to operate. You can activate the safe by entering a code. Before you check out, please make sure the door of the safe is unlocked & left open

Heating + Cooling

The air conditioning is use for cooling and is controlled from the panel on the wall next to the bedroom door. We also have electric radiators use for heating

Internet TV & Movies

Our Tv's are all connected to the Internet to allow full use of Netflix, Internet TV and Freeview channels.

Wi-Fi

There is free WiFi. To log in select: **OFH Bedrooms**
enter the password: **Eatstaypub**

Additional amenities

We also have the following additional amenities should you require them during your stay. Simply ask in the office or at the bar and we will bring these to your room: Sewing kit - dental kit – Ear plugs.

NESPRESSO MACHINE INSTRUCTIONS

6 steps to a delicious Nespresso coffee... *Enjoy!*



1 Fill the water tank with potable water.



2 Place a cup under the coffee outlet.



3 Turn machine ON by either pushing the slider or touching the controls. Light will blink on one of the coffee touches: heating up for approximately 25 seconds Steady light: ready.



4 Completely open the slider and insert a Nespresso capsule.



5 Close the slider.



6 Preparation will stop automatically. The capsule will be automatically ejected.

FLYING HORSE COFFEE

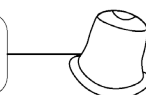


100% COMPOSTABLE ALL DAY BREWING CAPSULES

A BLEND OF COSTA RICA · GUATEMALA · INDONESIA

FULL BODY, CHOCOLATE NOTES, LIGHT ACIDITY

Zero impact, fully home compostable capsules that decompose in just 20 weeks!
No aluminium, no plastic, no allergens.



Transport

Addison Lee 0207 387 8888

Exclusive Car Services 0207 490 8822

Taxis to the Old Farmhouse from Heathrow Airport cost approximately £50.00 and £65.00 from Gatwick airport. Please let us know if you would like us to book a taxi service for you.

Tube stations

Kentish Town (Northern Line/Rail) 3-minute walk

Kentish Town West (Overground) 8-minute walk

Parking

Please visit www.justpark.com

Other Information

Outgoing phone call charges

International 50p/min

Local Landline 50p/min

Local Mobile No. 50p/min

All calls will be charged at the time of check out & according to the duration. To dial out just dial the number & press the arrow on the right hand side of the phone that says 'dial'.

**If you would like to take the following items home,
here are our charges:**

Dressing Gowns £30

Hairdryer £20

Do not disturb sign £10

Policies

We operate a strict non smoking